

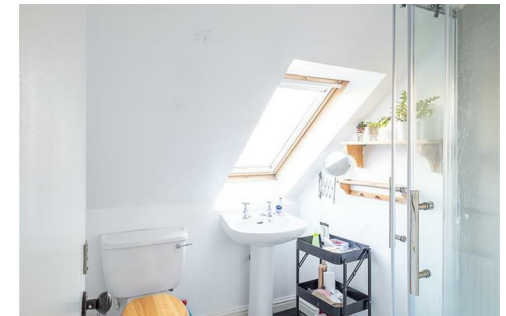
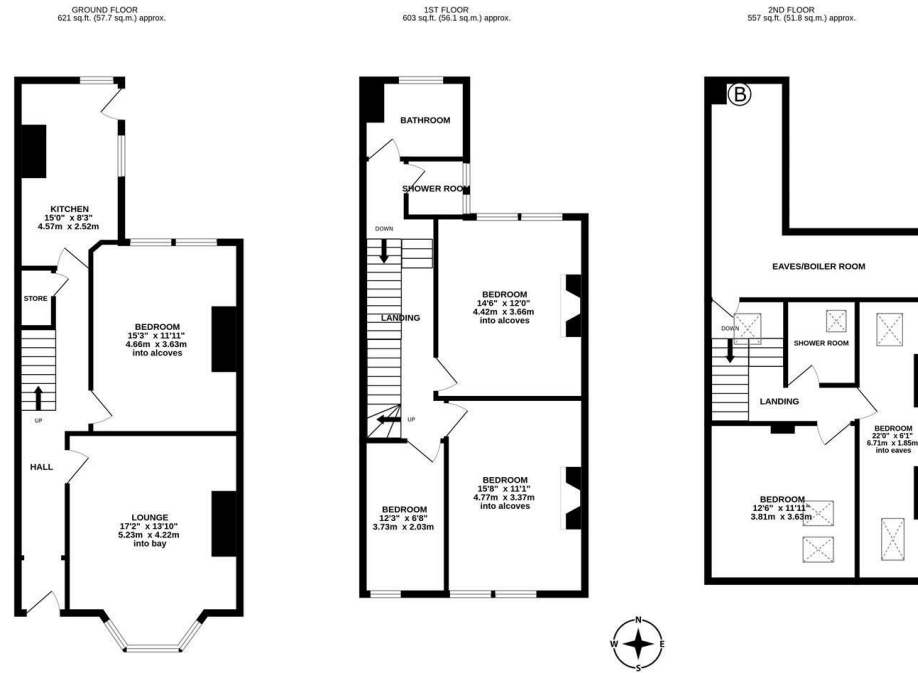


**\*\*AVAILABLE AUGUST 2026\*\* \*\*£105pppw\*\*  
**\*\*SIX BEDROOM STUDENT HOUSE\*\* \*\*65" WALL MOUNTED TV IN LOUNGE\*\*** This six bedroom terraced house is well positioned on Buston Terrace, Jesmond. Perfectly placed within walking distance to Osborne Road and Jesmond Metro Service. An ideal location for both student and professional tenants, being close to Newcastle city centre, countless bars cafe's and restaurants in Jesmond itself.**



Boasting close to 1,800 Sq ft, the property briefly comprises: lounge with walk in bay boasting a 65" wall mounted flatscreen TV; bedroom one (formally the dining room); kitchen with appliances; three first floor bedrooms; two separate shower room WCs on first floor; two second floor bedrooms with landing Eaves storage and separate shower room; externally a private rear yard and on street permit parking. Fully furnished with gas central heating.

Available 31st August 2026 | £105pppw/  
 £2,730pcm | 1,782 Sq. ft (165.5 m2) | Student Property | Furnished | Six Double Bedrooms | Lounge | Kitchen | 1st Floor Bathroom & WC | 2nd Floor Shower Room | Private Yard | Great Central Jesmond Location | On Street Permit Parking | Council Tax Band: D | GCH | EPC Rating: D



**£2,730 PCM**

**IMPORTANT NOTE:** These particulars and the descriptions and measurements herein do not constitute representation and whilst every effort has been made to ensure accuracy, this cannot be guaranteed.

